



OFFICER LIFESTYLE ESTATE
by LINCOLN PLACE

OFFICER LIFESTYLE ESTATE NEWSLETTER MAY 2024 EDITION



MOTHER'S DAY - 12TH MAY

Whether you are the one being spoiled or you are celebrating a special figure in your life, let's appreciate the love and care that mothers provide.

LINCOLN PLACE MATES RATES

All Lincoln Place residents will receive a 50% discount at our partner tourist parks in Nambucca River, Albury and Canberra!

THIS MONTH:

- Biggest Morning Tea
- This is Your Life - Prue Humphrey
- Pawfection Lunch
- Book club continues on the 2nd Tuesday of the month.

Welcome to May! April was a busy month here at Officer Lifestyle Estate with our Family Fun Day and ANZAC day commemorations taking place. A big thank you to all our resident volunteers, the day wouldn't have been such a success without your support and interaction with the local and broader community. Read on to find out what's happening in May at Officer Lifestyle Estate, including updates from our Lincoln Place Book Club and the latest lifestyle recommendations.

MARK YOUR CALENDAR



**MAY 5th
WORLD
LAUGHTER DAY**



**MAY 15th
INTERNATIONAL
DAY OF FAMILIES**



**MAY 12th
MOTHER'S DAY**

**MAY 18th
INTERNATIONAL
MUSEUM DAY**



**MAY 21st
INTERNATIONAL
TEA DAY**



**MAY 26th
NATIONAL
SORRY DAY**



**DID YOU KNOW MAY IS AUSSIE WINE
MONTH?**

A MESSAGE FROM OUR COMMUNITY MANAGER - ELLE BROWN

Parking your vehicle in our Officer Lifestyle Estate.

Please note that the visitor carpark is a designated carpark for your friends and relatives only, and as such cannot be used on a permanent basis by residents.

It is important that all residents adhere to this requirement, given the small number of available car park spots within our community.

Please do not be upset if you are asked to move your car out of these areas. If you would like options for parking a second car please come to reception and we can suggest a couple of options for you.

Feedback on our Community Garden

New veggie gardens have been put up. We are very interested to hear feedback of future planning for these. Please send an email to express your interest: manager@officerlifestyleestate.com.au

One suggestion has been next to pergola area over the rockery, however, we are open to options and suggestions.

Pawfection Lunch

On the 29th of May at 11am we will be holding the Pawfection Lunch by Lincoln Place. For a \$5 donation per dog they will receive a plate of Chicken, Ham and cheese, an after lunch treat and play time with other dogs.

All funds will go to the "Lost Dogs Home" in Cranbourne. If anyone has towels and blankets or food they would like to donate to the shelter this would be very much appreciated.

We look forward to seeing you there!

COMMUNITY INFO



Homes: 104
Residents: 157

JAM JAR COLLECTION

Can we please collect any jam jars as some residents would like to do a jam making sessions. Date to be confirmed dependent on donations.

CHOIR UPDATE

Choir now meets Thursday 1.30pm in the Lodge.
Everyone welcome!

SAVE THE DATE!

12th MAY:

Mother's Day

16th MAY:

This is your life - Prue Humphrey

18th MAY:

Hawaiian Night

28th MAY:

Biggest Morning Tea/ Lunch
Fundraiser for Cancer

29th MAY:

Pawfection Lunch by Lincoln
Place - 11am

OFFICER FAMILY FUN DAY



Officer Family Fun Day was a wonderful opportunity for our residents to enjoy activities with their friends and families. From Andy's antics to a sausage sizzle and petting zoo, there was something for everyone.

LIFE AT OFFICER



Our new veggie garden is making great progress!



Residents enjoying a scone morning tea in the lounge



Out and About

Teat yourself to a bite to eat and try on of our local spots:

- Nancy Eatery, 114 Mulcahy Rd, Pakenham: A great little cafe for breakfast and lunch, located in Robert Gordon Pottery warehouse. Enjoy a coffee or light meal with a glass of wine in a casual, relaxing environment.
- Jason's Restaurant Winery, 2 McBride Rd Upper Beaconsfield: Enjoy a delicious lunch or dinner in this scenic restaurant with beautiful gardens close to Lincoln Place. A wonderful dining experience!
- Bellevue Orchard, Browns road officer Rustic: Quaint, good coffee and food & very friendly staff.

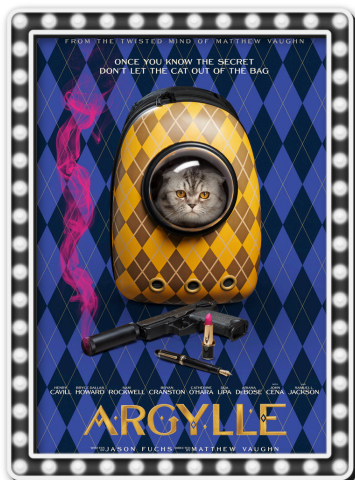
APPLE ORCHARD





TUESDAY NIGHT AT THE MOVIES

Enjoy a relaxing night every Tuesday with the newest releases and classics.



ARGYLE

A reclusive author who writes espionage novels about a secret agent and a global spy syndicate realizes the plot of the new book she's writing starts to mirror real-world events, in real time.

WHEN: 7th May



AMERICAN FICTION

A novelist who's fed up with the establishment profiting from Black entertainment uses a pen name to write a book that propels him into the heart of the hypocrisy and madness he claims to disdain.

WHEN: 14th May



GRAN TURISMO

The true story of a team of unlikely underdogs -- a working-class gamer, a former race-car driver, and an idealistic motorsport executive -- who risk it all to take on the most elite sport in the world.

WHEN: 28TH MAY

CITIZEN KANE (1941)

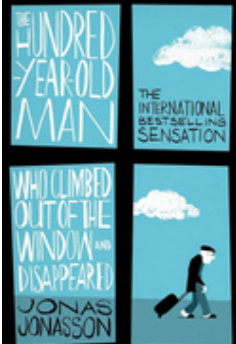
This classic film follows aftermath of the death of publishing tycoon Charles Foster Kane, as reporters scramble to uncover the meaning of his final utterance: 'Rosebud.'

WHEN: 21st May

Officer Lincoln Place Book Club

We meet the second Tuesday of the month at 4pm in the lodge. Please join in, we have a lot of laughs during our discussions.

Contact: Joan Gaudion, 0421 705 726



'The One Hundred Year Old Man Who Climbed out the Window and Disappeared' By Jonas Jonasson

Jonas Jonasson's book, 'The One Hundred Year Old Man Who Climbed out the Window and Disappeared' received an average rating of 8 out of 10. Some found the humour way too dry and others the complete opposite. However we all agreed we would like to see the film. He certainly demonstrates the Swedish sense of humour.

'The Last Thing He Told Me' By Laura Dave

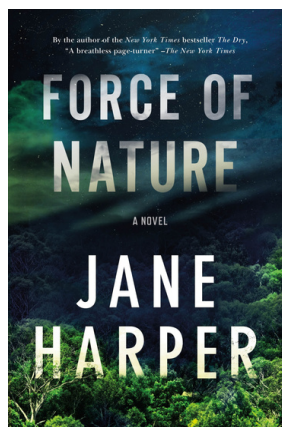
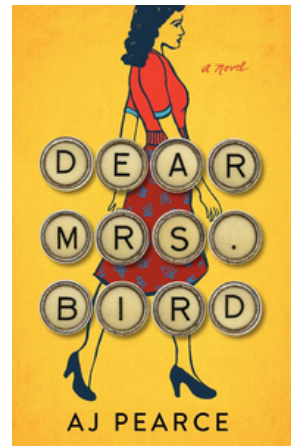
Average rating 6.5. It was slow to start and jumped from the past to the present too much.

At times this could confuse the reader. The storyline was good and once past half way became a 'can't put it down book' for some. Again as this has turned into a TV series, many would like to see it.



DEAR MRS. BIRD By AJ Pearce

'Dear Mrs. Bird' averaged a rating of 7 out of 10. Although it was very authentic to the period WW2 some of the characters were quite boring. It certainly informed us of the social norms and expectations of the time and presented a different view on that part of history.



The Force of Nature By Jane Harper

Average rating of 5. Many felt the story could have been easily reduced to 50% its size. We also thought there was an overkill in the number of descriptive words and some just didn't make sense. Themes were added with no real connection or purposeful reason. It was felt that 'it left quite a lot in up in the air'. Another book to see as a movie.

The Force of Nature By Jane Harper

This book definitely did not win any prize from the Lincoln Place Book Club. Most did not finish it as it was quite difficult to find a reason for reading it through to the end. It is an entirely different style of writing that forced you to re-read each sentence to try to capture the contextual meaning to only realise it is of no consequence or value if you can't. You've missed nothing!



What we're watching

We are thrilled to present our TV suggestions for the upcoming month. Whether you enjoy gripping dramas, enlightening documentaries, or light-hearted comedies, our picks are customised to suit your preferences. So, grab a refreshing drink, get comfortable in your favorite spot, and let these shows keep you entertained. Enjoy watching!

Bodkin Season 1

A group of podcasters set out to investigate the mysterious disappearance of three strangers in an idyllic Irish town. But when they start to pull the strings, they find a story much bigger and stranger than they could have imagined.

Available to watch on Netflix May 9.



Tony Armstrong's Extra-Ordinary Things

Beloved Television Presenter and former AFL player Tony Armstrong unfolds his bike and hits the road to learn about the untold history of Australia. He travels the length and breadth of the country to meet Aussies with ordinary things that hold extra-ordinary stories.

Premieres Tuesday 21 May 8.00pm on ABC TV. Stream all episodes on ABC iview.

Recipe of the Month

Donna hay's Choc Cashew Fudge Bars

INGREDIENTS:

- ½ CUP (125ML) PURE MAPLE SYRUP
- 160G DARK (70% COCOA) CHOCOLATE, CHOPPED
- ⅔ CUP (160ML) CASHEW BUTTER
- 50G DARK (70% COCOA) CHOCOLATE, MELTED EDIBLE DRIED ROSE PETALS (OPTIONAL)

With Mother's Day coming up, these decadent choc cashew fudge bars are the perfect treat.

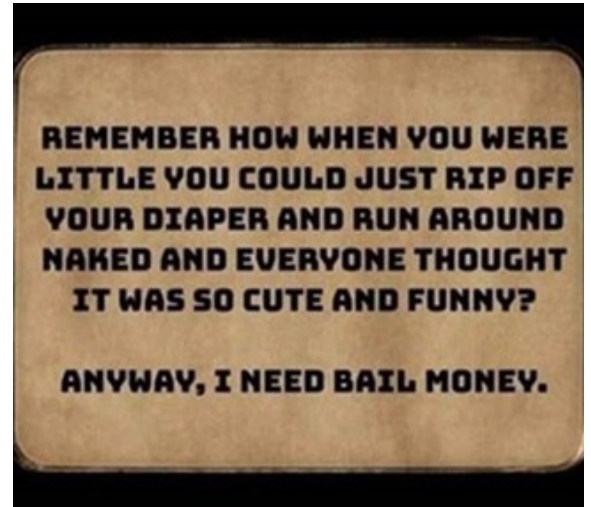


METHOD:

- Line a 20cm x 10cm loaf tin with non-stick baking paper+.
- Place the maple and chocolate into a saucepan over very low heat. Stir continuously until smooth. Add the cashew butter and mix until smooth and thick.
- Press into the prepared tin and smooth the surface, using the back of a spoon. Refrigerate for 30 minutes or until set. Remove from the fridge for 10 minutes. Trim the ends and cut the fudge into 8 bars. Place on a sheet of non-stick baking paper.+
- Pour the melted chocolate over the fudge bars and sprinkle with rose petals. Refrigerate for 30 minutes or until set++.
- To give these bars as a gift, wrap in sheets of non-stick baking paper and simply tie the ends with string or ribbon+. Makes 8 bars

*These choc cashew fudge can keep stored in an airtight container in the fridge for up to 2 weeks.

KEEPING THINGS LIGHT



Refer a friend to receive a \$1k Visa Gift Card



We know that Lincoln Place Lifestyle Estates are a great place to live. If you help us spread the word about Lincoln Place by referring someone to us who buys one of our new homes, we will reward you both. You will receive a \$1,000 Visa Gift Card, and they will receive \$1,000 off the purchase price of their home.



There is no catch and you can refer as many people as you like. You don't have to be living at Lincoln Place to take advantage of this great offer*. Simply complete this form and leave the rest to us.

*Some terms and conditions apply. lincolnplace.com.au/



HOME MAINTENANCE

For all home maintenance enquiries
please email:
acomaintenance@lincolnplace.com.au



24 HOUR EMERGENCY TELEPHONE NUMBERS DIAL 000

Mepstead Electrical - Travis - 24/7
0419 534 942 OR 5943 5541

LUV2PLUMB - Gareth - 24/7
1300 259 053

POOL TIMES

During school holidays kids are welcome in the pool area at all times with the supervision of the resident. During the school term, we kindly ask that kids are welcome in the pool area between 3pm – 6pm.

SAFETY IN NUMBERS!

We highly encourage all residents who use the gym and pool to do so with a buddy for personal safety. In the unlikely event that something goes wrong, it's always comforting to know that someone is close by. If you can't go with a buddy then please inform someone of where you will be.

OFFICE HOURS

9am – 4pm Monday/Tuesday/Thursday

9am – 2.15pm Wednesdays

9am – 12 noon Fridays

Available on the phone until 5pm on 0407 134 582

FUEL DISCOUNTS

Victorian Seniors Card holders can now save 4c per litre at participating United service stations using a digital or plastic United fuel discount card. Alternatively, get the 7/11 fuel app to access savings rewards.



Residents to please use the most direct routes to and from their homes when driving. Our streets are narrow and the least amount of time in a car on the road will help reduce the chance of accidents. Always keeping to the speed of 10kms (Walking pace).

Please ensure that you either park your vehicle in your own carport or own driveway. If you require a short-term parking arrangement due to unforeseen circumstances, please reach out to the Community Manager, so that we can review your request and provide appropriate guidance to your individual circumstances.



EXTERNAL CHANGES TO YOUR HOME

Don't forget that any external changes to your home must be in the form that can be provided to you by reception, this includes gardens, pergolas and screening.

Please read your homeowners guide under the heading Community Living Guidelines in regards to how we treat each other.

Lincoln Place mate's rates

A special invitation to all Lincoln Place Community residents to visit our three Tourist Parks across ACT and NSW.

We provide a variety of caravan, camping and villa accommodation, ideal place for a short break, stop over or holiday. Relaxing and fun, we offer a welcoming environment, where families are catered for in a safe and social community.

NAMBUCCA RIVER TOURIST PARK

Visit the beautiful Nambucca River Tourist Park with a resort style swimming pool where there's plenty of ways to relax. Choose from caravan and camping sites or book a cabin sleeping up to six people - perfect for a couple's getaway or family. Choose to prepare your meals in your cabin or the spacious camp kitchen and relax at the alfresco dining area. We offer a variety of cabin and villa accommodation to suit all budgets - from luxury villas to budget cabin accommodation - so it's safe to say we have something for all holidaymakers.

Features include:

- Pet friendly - off the leash dog run
- Riverside walking trail
- Putt putt golf
- Outdoor chess board
- Driving range
- Nearby - Macksville and Nambucca Heads

www.riverpark.com.au

Phone: (02) 6568 1850

Email: reception@riverpark.com.au

SUNDOWN VILLAS TOURIST PARK

Sundown Villas offers quality accommodation in Canberra, perfect for couples, families, and groups. Located in Symonston, less than 10 minutes from Canberra Airport and 10 minutes to the Canberra CBD, Sundown Villas offers easy access to all the top attractions in the ACT.

Select from one of our spacious accommodation villas including the King spa villa, Queen villas, and Family villas. Top five things to do in Canberra - Australian War Memorial, National Portrait Gallery, Old Parliament House, Mount Ainslie Lookout, National Zoo, and Aquarium.

Features include:

- Pet friendly accommodation
- Tennis court
- Resort style pool
- BBQ Facilities
- Free parking
- Breakfast (cost incurred)

www.sundownvillas.com.au

Phone: (02) 6239 0333

Email: reception@sundownvillas.com.au

ALBURY GARDENS TOURIST PARK

Conveniently located just off the Hume Highway and moments from the stunning Murray River and Lake Hume, Albury Gardens Tourist Park is the perfect place to relax. It's a fabulous destination for NSW country escapes, as well as restorative travel breaks and nightly stopovers on the busy Sydney-Canberra-Melbourne route. With accommodation to suit all budgets and plenty of things to see and do, you're sure to enjoy every minute of your stay at Albury Gardens Tourist Park. Designed to feel like a home away from home, the park is renowned for its convenient amenities and family-friendly atmosphere. Set among the quiet streets of the town's northern suburbs, it is surrounded by scenic countryside and a great range of local attractions and essential services. Albury Gardens Tourist Park hosts a choice of accommodation, including cabins, powered drive-through and ensuite caravan sites, and beautifully landscaped camping sites. As Albury Gardens Tourist Park is pet-friendly, we welcome guests who want to bring along their four-legged friend. Please contact our friendly team to confirm availability for your pet.

Features:

- Swimming pool
- BBQ facilities on site
- Drive through caravan sites and ensuite camp sites
- Guest laundry

www.alburylv.com.au

Phone: (02) 6040 6275

Email: info@alburylv.com.au

Please visit the Lincoln Place website promotions page to view terms and conditions.

Monthly calendar

May 2024

Sunday	Monday	Tuesday	Wednesday	Thursday	Friday	Saturday
			1 PICKLE BALL MATCH 1pm Craft Group 6:30pm Snooker	2 9am Aqua 1:30pm Choir 2:30pm Lawn Bowls 7pm Ladies Billiard and Cards	3 11am Aqua 5pm Happy Hour Bar Open	4
5 4pm Community BBQ	6 10am Morning Tea 11am Pool Fun 2:30pm Lawn Bowls 7pm Bingo	7 6:30pm Snooker 7pm Movies	8 PICKLE BALL MATCH 1pm Craft Group 6:30pm Snooker	9 9am Aqua 1:30pm Choir 2:30pm Lawn Bowls 7pm Ladies Billiard and Cards	10 11am Aqua 5pm Happy Hour Bar Open	11
12 MOTHER'S DAY 4pm Community BBQ	13 10am Morning Tea 11am Pool Fun 2:30pm Lawn Bowls 7pm Bingo	14 Massage Tuesday 4pm Book Club 6:30pm Snooker 7pm Movies	15 PICKLE BALL MATCH 1pm Craft Group 6:30pm Snooker	16 This is Your Life 9am Aqua 1:30pm Choir 2:30pm Lawn Bowls 7pm Ladies Billiard and Cards	17 11am Aqua 5pm Happy Hour Bar Open	18 Hawaiian Night
19 4pm Community BBQ	20 10am Morning Tea 11am Pool Fun 2:30pm Lawn Bowls 7pm Bingo	21 Massage Tuesday 6:30pm Snooker 7pm Movies	22 PICKLE BALL MATCH 1pm Craft Group 6:30pm Snooker	23 9am Aqua 1:30pm Choir 2:30pm Lawn Bowls 7pm Ladies Billiard and Cards	24 11am Aqua 5pm Happy Hour Bar Open	25
26 4pm Community BBQ	27 10am Morning Tea 11am Pool Fun 2:30pm Lawn Bowls 7pm Bingo	28 Biggest Morning Tea Fundraiser 6:30pm Snooker 7pm Movies Massage Tuesday	29 PAWFECTIION LUNCH Pickle ball Match 1pm Craft Group 6:30pm Snooker	30 9am Aqua 1:30pm Choir 2:30pm Lawn Bowls 7pm Ladies Billiard and Cards	31 11am Aqua 5pm Happy Hour Bar Open	



LINCOLN PLACE
Feel at home