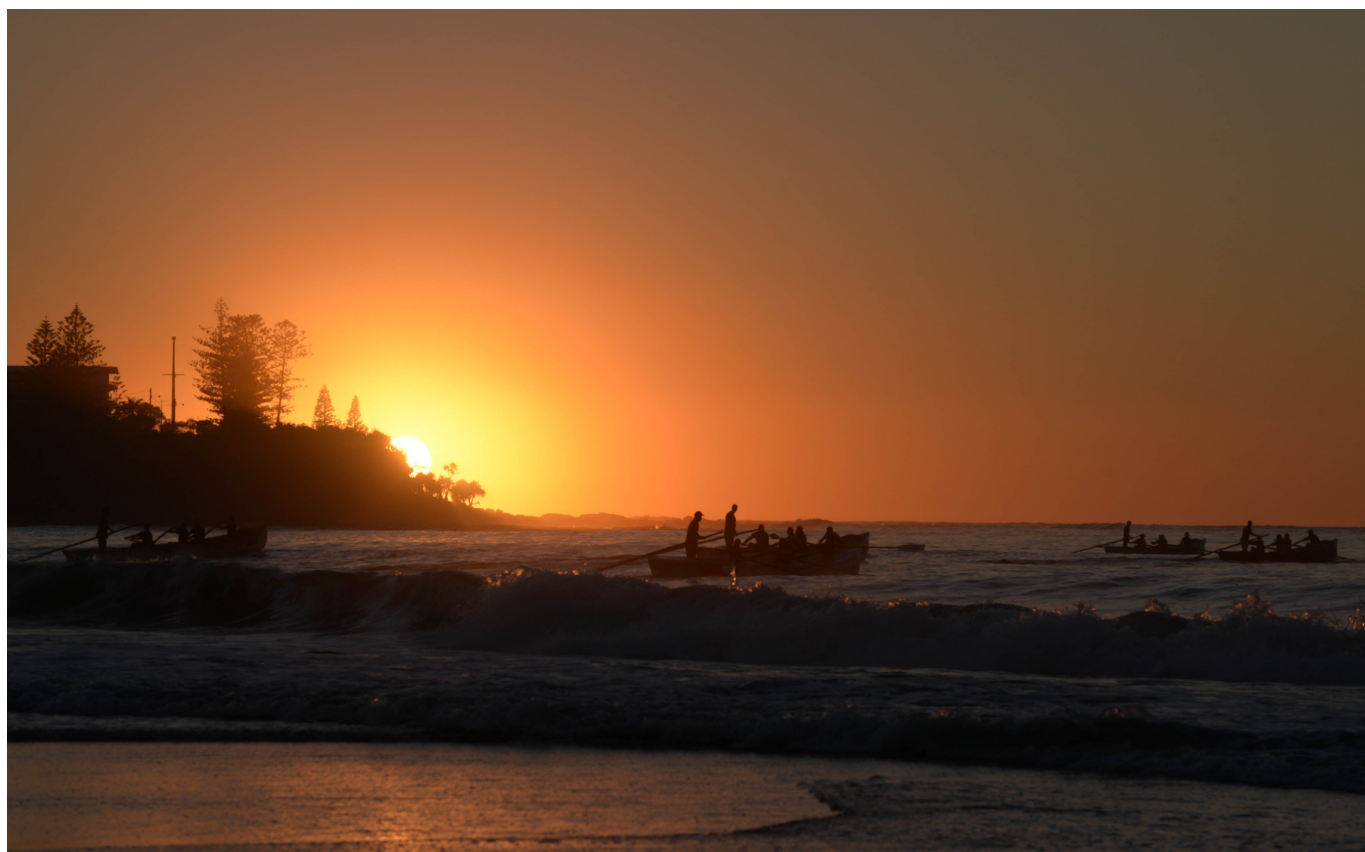




OFFICER LIFESTYLE ESTATE
by LINCOLN PLACE

OFFICER LIFESTYLE ESTATE NEWSLETTER APRIL 2024 EDITION



ANZAC DAY SERVICE

An ANZAC day service will be held on the 25th of April at 6am with breakfast to be enjoyed after.

LINCOLN PLACE MATES RATES

All Lincoln Place residents will receive a 50% discount at our partner tourist parks in Nambucca River, Albury and Canberra!

THIS MONTH:

- Family Fun Day
- This is your life: Prue Humphries
- Choir rehearsals continue 5pm on Wednesdays

Happy April! We hope you had a wonderful Easter, taking the opportunity to cherish time with your loved ones. April is a busy month here at Officer Lifestyle Estate with plenty of exciting events on offer. We are so excited to see you at our Family Fun Day on the 11th of April. There will be fun and games for all ages so don't forget to bring along your friends and family. As always, thankyou residents for helping build a warm sense of community in this first quarter of 2024.

MARK YOUR CALENDAR



APRIL 1st
APRIL FOOL'S
DAY



APRIL 15th
WORLD ART
DAY



APRIL 6th
WORLD DAY FOR
PHYSICAL
ACTIVITY



APRIL 23rd
WORLD BOOK
DAY



APRIL 22nd
EARTH DAY



APRIL 25TH
ANZAC DAY



DID YOU KNOW APRIL IS JAZZ
APPRECIATION MONTH?

A MESSAGE FROM OUR DEVELOPMENT MANAGER

Will Stirling – Development Manager

- Clubhouse Update: New dining tables have been ordered, with delivery expected by the end of March. Minor modifications are ongoing to further enhance the clubhouse experience.
- Community Bus: The Development team has presented a business case to acquire a new 12-seater community bus.
- Open Day - LP Family Day: Scheduled for April 11th, 2024. We are eagerly anticipating this event along with an upcoming sales event.
- Masterplan Updates: Stage 4 and 5 are pending council endorsement, anticipated to be approved by the end of April 2024. We expect civil works to commence before June 2024, marking a significant milestone for the final 58 homes.
- Construction Progress: There are currently 18 new builds in progress at various stages, with Stage 2 projected to be completed by March 2024. Stage 3 is expected to see all houses finished by June 2024.
- Pickleball: A temporary court has been set up, appears to be well received by the community. Plans for a Tournament court are likely to be included in the next FY25 budget. Please reach out with any temporary fencing ideas as the current court's fencing needs to be removed.
- Display Homes: Lot 43 is transitioning to Lot 55, which will serve as a permanent display for the next 6 months. Lot 43 will be available for purchase by cash buyers.

OP SHOP DONATIONS

We are calling out for any items to be donated!

Acceptable donations include:

- Clothing
- Shoes
- Bed linen
- Bric a brac
- Furniture

All items can be left at 148. Furniture pickup can also be arranged for collection from units at a small additional charge.

COMMUNITY INFO



Homes: 104

Residents: 157

ALWAYS HEAR

On the 12th of April, get your free wax removal and hearing check. Please make an appointment at the office.

HAIRDRESSER

Justine, our wonderful hairdresser is available throughout the month. To book an appointment, please text 0403 310 883.

SAVE THE DATE!

11th APRIL:

10am-3pm - Family Fun Day

12th APRIL:

Always Hear - hearing check and wax removal

16th APRIL:

10:30am - This is your life: Prue Humphries.

7pm - 'Those Magnificent Men and Their Flying Machines' Screening

25TH APRIL:

Anzac Day service at 6am

EASTER FAMILY FUN DAY



The Easter Bunny popped by last month, treating our little ones to a thrilling egg hunt!



LIFE AT OFFICER



Some community residents enjoying a wonderful lunch at Elevations in Emerald.



Making excellent use of our new baby grand piano in the lodge!



Out and About

Teat yourself to a bite to eat and try on of our local cafe recommendations:

- Blondie's Kafe - 27 Golden Banksia Drive Officer
- High Horse Café - 4 Cotswold Cres, Officer
- Soulfoods Cafe @ Officer - 445 Princes Hwy



THE NESBITT ASIAN TOUR



*Caravan Trip to
Hall's Gap*





TUESDAY NIGHT AT THE MOVIES

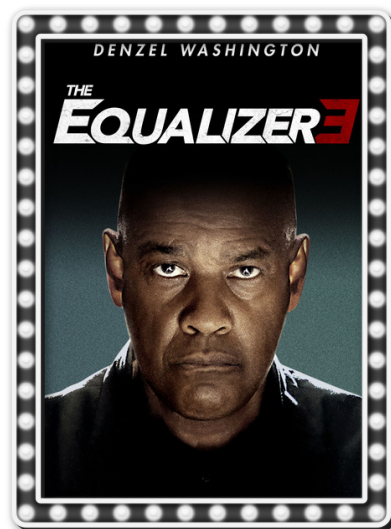
Enjoy a relaxing night every Tuesday with the newest releases and classics.



PRISCILLA

When teenager Priscilla Beaulieu meets rock 'n' roll superstar Elvis Presley at a party, a thrilling crush develops. Witness the highs and low of their whirlwind romance through Priscilla's eyes.

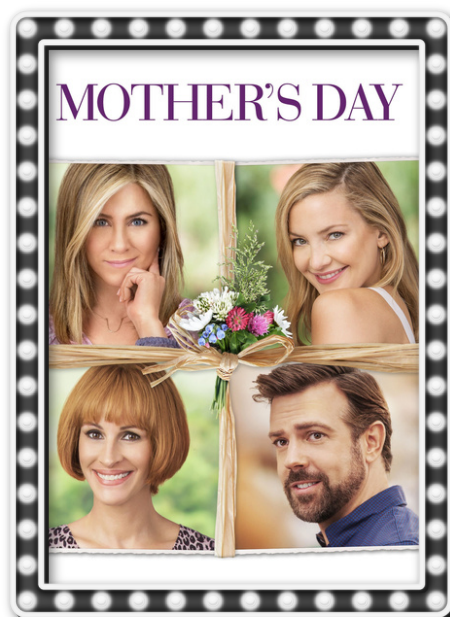
WHEN: 9TH APRIL



THOSE MAGNIFICENT MEN IN THEIR FLYING MACHINES

This 1965 classic follows eccentric aviators competing in a London to Paris air race in the early days of aviation. The film humorously depicts their challenges, mishaps, and rivalries.

WHEN: 16th April



MOTHER'S DAY

THE EQUALIZER 3
Government assassin Robert McCall finds himself in Southern Italy, embroiled in a deadly clash with the local mafia. Experience the final chapter in the action-packed franchise, starring Denzel Washington.

WHEN: 23RD APRIL

MOTHER'S DAY
Get ready for Mother's day with this heart-warming comedy. Featuring a star-studded cast. The film follows the lives of several mothers dealing with issues in their personal lives when their worlds collide in week leading up to Mother's Day.

WHEN: 30TH APRIL

What We're Reading



HARD BY A GREAT FOREST

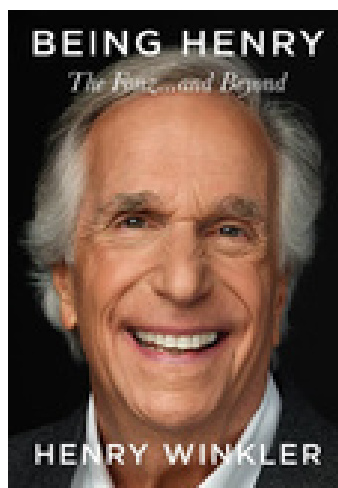
By Leo Vardiashvili

Saba, Sandro, and their father, Irakli, flee from conflict in the former Soviet Republic of Georgia seeking refuge in England. Years later, Irakli returns to Georgia but disappears, leaving a mysterious message. Saba retraces his father's steps, uncovering family secrets and the impact of war on their homeland. 'Hard by a Great Forest' explores the trauma of war and the resilience of a people.

WHAT HAPPENED TO NINA?

By Dervla McTiernan

From the No.1 bestselling author of *The Murder Rule* comes a suspenseful novel about two families in conflict. Nina and Simon, a perfect couple, face a mysterious incident at a Vermont cabin. When Nina's parents push the police for answers, Simon's parents rush to protect him. Outsmarted by Simon's wealthy family, Nina's parents decide it's time to break the rules and take matters into their own hands.



BEING HENRY

By Henry Winkler

Henry Winkler, known for his role as 'The Fonz' in *Happy Days*, shares his journey in this profound and funny memoir. He discusses his childhood, struggles with dyslexia, challenges of typecasting, and finding new roles. Perfect for non-fiction enjoyers, 'Being Henry' reflect on truth, kindness, and self-fulfillment beyond Hollywood stardom.

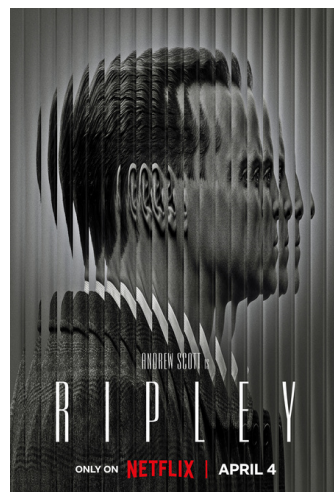
What we're watching

We are thrilled to present our TV suggestions for the upcoming month. Whether you enjoy gripping dramas, enlightening documentaries, or light-hearted comedies, our picks are customised to suit your preferences. So, grab a refreshing drink, get comfortable in your favorite spot, and let these shows keep you entertained. Enjoy watching!

Ripley

This eight-episode limited series is a TV adaptation of Patricia Highsmith's 1955 crime novel *The Talented Mr. Ripley*. The show follows a grifter named Ripley living in New York during the 1960s who is hired by a wealthy man to begin a complex life of deceit, fraud, and murder.

Available to watch on Netflix April 4.



Belgravia

From the creators of *Downton Abbey*, this series, based on Julian Fellowes' novel, dives into the secrets and scandals of 19th-century London high society. It follows the Trenchard family's rise and the hidden truths that could unravel their newfound status. With lavish costumes and intricate plots, 'Belgravia' offers a captivating glimpse into Victorian society's complexities.

Available to stream on ABC iview.

Recipe of the Month

ANZAC BISCUIT ICECREAM SANDWICHES

Serves:12

Ingredients:

- 1 cup plain flour
- 1 cup rolled oats
- 1/2 tsp cinnamon
- 1 cup desiccated coconut
- 1/2 cup chopped macadamia nuts
- 1/4 cup finely chopped crystallised ginger
- 3/4 cup caster sugar
- 1 tsp finely grated lemon rind
- 12g butter
- 2 Tbs golden syrup
- 1 tsp bicarbonate soda
- 1 Tbs boiling water
- 1L of your favourite ice cream



This decadent recipe is the perfect twist on an Australian classic. Enjoy the traditional way, or upgrade with creamy vanilla ice cream.

Pre-heat the oven to 180 C (160 fan-forced). Line 2 trays with baking paper.

1. Sift flour into a bowl. Add oats, cinnamon, coconut, macadamia nuts, ginger, sugar and lemon rind. Stir to combine. Make a well in the centre.
2. Melt the butter and golden syrup in a small saucepan over medium heat. Once melted, remove from heat.
3. Combine the bicarbonate soda and water in a small bowl. Stir. Add to the butter mixture and stir well to combine.
4. Add this mixture to the dry ingredients. Stir well to combine.
5. Using the palm of your hands, roll level tablespoons of the biscuit mixture to form a ball (approximately 40g). Place the balls on the prepared trays, 3cm apart. Flatten them slightly with the palm of your hand.
6. Bake for 10-13 minutes or until golden in colour. Allow them to sit on the trays for 5 minutes after removing them from the oven, then transfer them to a wire rack to cool completely. The biscuits will have a chewy texture. If you prefer a crunchy texture proceed to step 8 instead.
7. Pre-heat the oven to 120 C. Place the biscuits on trays and bake for 20 minutes. Switch the oven off. Leave the biscuits in the oven until the oven is completely cool.
8. To make ice cream sandwiches, place a scoop of ice cream between two biscuits, and press together slightly. They can be eaten immediately, otherwise, they can be made and stored in the freezer in an airtight container for days.

KEEPING THINGS LIGHT



Did you know?

The national animal of Scotland is the unicorn! It has been a Scottish heraldic symbol since the 12th century, representing purity, innocence, and power.



Why did the golfer bring two pairs of pants?
In case he got a hole in one!

April's birthstone is the diamond, symbolizing strength, clarity, and eternal love.



Did you hear about the claustrophobic astronaut?
He needed space!

Refer a friend to receive a \$1k Visa Gift Card



We know that Lincoln Place Lifestyle Estates are a great place to live. If you help us spread the word about Lincoln Place by referring someone to us who buys one of our new homes, we will reward you both. You will receive a \$1,000 Visa Gift Card, and they will receive \$1,000 off the purchase price of their home.



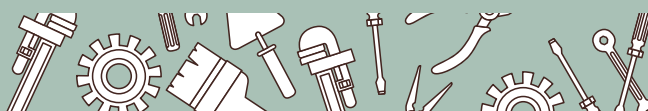
There is no catch and you can refer as many people as you like. You don't have to be living at Lincoln Place to take advantage of this great offer*. Simply complete this form and leave the rest to us.

*Some terms and conditions apply. lincolnplace.com.au/



HOME MAINTENANCE

For all home maintenance enquiries
please email:
acomaintenance@lincolnplace.com.au



24 HOUR EMERGENCY TELEPHONE NUMBERS DIAL 000

Mepstead Electrical - Travis - 24/7
0419 534 942 OR 5943 5541

LUV2PLUMB - Gareth - 24/7
1300 259 053

POOL TIMES

During school holidays kids are welcome in the pool area at all times with the supervision of the resident. During the school term, we kindly ask that kids are welcome in the pool area between 3pm – 6pm.

SAFETY IN NUMBERS!

We highly encourage all residents who use the gym and pool to do so with a buddy for personal safety. In the unlikely event that something goes wrong, it's always comforting to know that someone is close by. If you can't go with a buddy then please inform someone of where you will be.

OFFICE HOURS

9am – 4pm Monday/Tuesday/Thursday

9am – 2.15pm Wednesdays

9am – 12 noon Fridays

Available on the phone until 5pm on 0407 134 582

FUEL DISCOUNTS

Victorian Seniors Card holders can now save 4c per litre at participating United service stations using a digital or plastic United fuel discount card. Alternatively, get the 7/11 fuel app to access savings rewards.



Residents to please use the most direct routes to and from their homes when driving. Our streets are narrow and the least amount of time in a car on the road will help reduce the chance of accidents. Always keeping to the speed of 10kms (Walking pace)

If your vehicles do not fit in your carport or driveway, please do not park in the visitor carparks. These are intended for family and friends who come to visit. Please come to the office if you are unsure of where to park.



LPSINGERS

Our LPSingers have changed their practice time to 5 pm Wednesdays from March 6th.

Practice shall continue to be in The Lodge.

New members most welcome.

No experience necessary just a love for music!

Lincoln Place mate's rates

A special invitation to all Lincoln Place Community residents to visit our three Tourist Parks across ACT and NSW.

We provide a variety of caravan, camping and villa accommodation, ideal place for a short break, stop over or holiday. Relaxing and fun, we offer a welcoming environment, where families are catered for in a safe and social community.

NAMBUCCA RIVER TOURIST PARK

Visit the beautiful Nambucca River Tourist Park with a resort style swimming pool where there's plenty of ways to relax. Choose from caravan and camping sites or book a cabin sleeping up to six people - perfect for a couple's getaway or family. Choose to prepare your meals in your cabin or the spacious camp kitchen and relax at the alfresco dining area. We offer a variety of cabin and villa accommodation to suit all budgets - from luxury villas to budget cabin accommodation - so it's safe to say we have something for all holidaymakers.

Features include:

- Pet friendly - off the leash dog run
- Riverside walking trail
- Putt putt golf
- Outdoor chess board
- Driving range
- Nearby - Macksville and Nambucca Heads

www.riverpark.com.au

Phone: (02) 6568 1850

Email: reception@riverpark.com.au

SUNDOWN VILLAS TOURIST PARK

Sundown Villas offers quality accommodation in Canberra, perfect for couples, families, and groups. Located in Symonston, less than 10 minutes from Canberra Airport and 10 minutes to the Canberra CBD, Sundown Villas offers easy access to all the top attractions in the ACT.

Select from one of our spacious accommodation villas including the King spa villa, Queen villas, and Family villas. Top five things to do in Canberra - Australian War Memorial, National Portrait Gallery, Old Parliament House, Mount Ainslie Lookout, National Zoo, and Aquarium.

Features include:

- Pet friendly accommodation
- Tennis court
- Resort style pool
- BBQ Facilities
- Free parking
- Breakfast (cost incurred)

www.sundownvillas.com.au

Phone: (02) 6239 0333

Email: reception@sundownvillas.com.au

ALBURY GARDENS TOURIST PARK

Conveniently located just off the Hume Highway and moments from the stunning Murray River and Lake Hume, Albury Gardens Tourist Park is the perfect place to relax. It's a fabulous destination for NSW country escapes, as well as restorative travel breaks and nightly stopovers on the busy Sydney-Canberra-Melbourne route. With accommodation to suit all budgets and plenty of things to see and do, you're sure to enjoy every minute of your stay at Albury Gardens Tourist Park. Designed to feel like a home away from home, the park is renowned for its convenient amenities and family-friendly atmosphere. Set among the quiet streets of the town's northern suburbs, it is surrounded by scenic countryside and a great range of local attractions and essential services. Albury Gardens Tourist Park hosts a choice of accommodation, including cabins, powered drive-through and ensuite caravan sites, and beautifully landscaped camping sites. As Albury Gardens Tourist Park is pet-friendly, we welcome guests who want to bring along their four-legged friend. Please contact our friendly team to confirm availability for your pet.

Features:

- Swimming pool
- BBQ facilities on site
- Drive through caravan sites and ensuite camp sites
- Guest laundry

www.alburylv.com.au

Phone: (02) 6040 6275

Email: info@alburylv.com.au

Please visit the Lincoln Place website promotions page to view terms and conditions.

Monthly calendar

April 2024

Sunday	Monday	Tuesday	Wednesday	Thursday	Friday	Saturday
EASTER SUNDAY	1 10am Morning Tea 11am Pool Fun 2:30pm Lawn Bowls 7pm Bingo EASTER MONDAY	2 6:30pm Snooker 7pm Movies	3 PICKLE BALL MATCH 1pm Craft Group 6:30pm Snooker	4	5 11am Aqua 5pm Happy Hour Bar Open	6
7 4pm Community BBQ	8 10am Morning Tea 11am Pool Fun 2:30pm Lawn Bowls 7pm Bingo	9 Massage Tuesday 6:30pm Snooker	10 PICKLE BALL MATCH 1pm Craft Group 6:30pm Snooker	11 FAMILY FUN DAY 9am Aqua 2:30pm Lawn Bowls 7pm Ladies Billiard and Cards	12 11am Aqua 5pm Happy Hour Bar Open	13
14 4pm Community BBQ	15 10am Morning Tea 11am Pool Fun 2:30pm Lawn Bowls 7pm Bingo	16 10:30am This is your Life 6:30pm Snooker 7pm Movies	17 PICKLE BALL MATCH 1pm Craft Group 6:30pm Snooker	18 9am Aqua 2:30pm Lawn Bowls 7pm Ladies Billiard and Cards	19 11am Aqua 5pm Happy Hour Bar Open	20
21 4pm Community BBQ	22 10am Morning Tea 11am Pool Fun 2:30pm Lawn Bowls 7pm Bingo	23 Massage Tuesday 6:30pm Snooker 7pm Movies	24 PICKLE BALL MATCH 1pm Craft Group 6:30pm Snooker	25 9am Aqua 2:30pm Lawn Bowls 7pm Ladies Billiard and Cards ANZAC DAY	26 11am Aqua 5pm Happy Hour Bar Open	27
28 4pm Community BBQ	29 10am Morning Tea 11am Pool Fun 2:30pm Lawn Bowls 7pm Bingo	30 6:30pm Snooker 7pm Movies	31 PICKLE BALL MATCH 1pm Craft Group 6:30pm Snooker			



LINCOLN PLACE
Feel at home