



GRIFFITH HILL LIFESTYLE ESTATE

by LINCOLN PLACE

The

ROWE

FROM \$440,000

Step into the Rowe, where you'll find the epitome of low-maintenance living. This modern home showcases a spacious and open-plan living design, seamlessly connecting the contemporary kitchen to a dining room and a cozy family lounge room. The two bedrooms are thoughtfully equipped with built-in robes, while a stylish family bathroom, an ensuite, and a separate laundry add convenience to this well-crafted home. Completing this delightful package is a carport with ample space for one car, providing secure parking and ease of access. Embrace the abundant comforts of modern living with the Rowe - your ideal sanctuary awaits.



*Artist's impression only

For more information please contact:

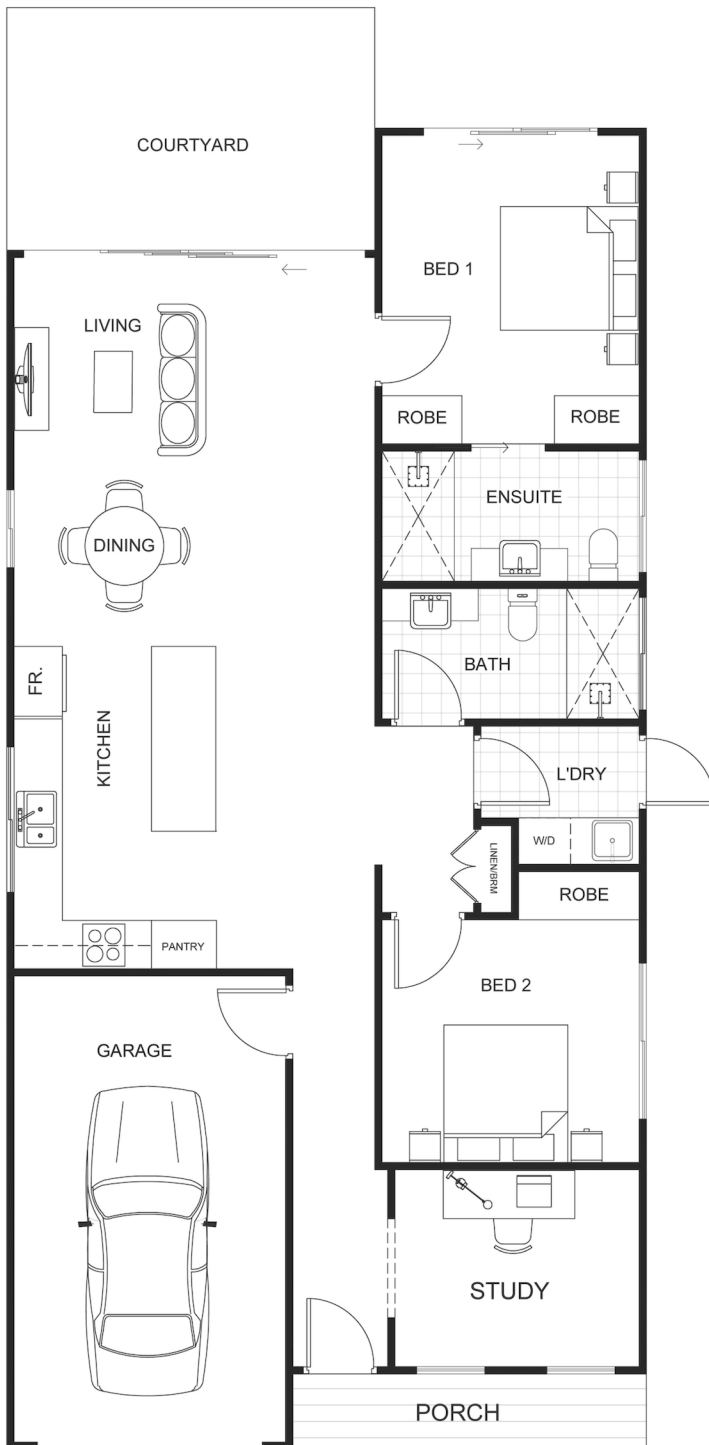
 0418 277 007

 joepelle@lincolnplace.com.au



GRIFFITH HILL LIFESTYLE ESTATE

by LINCOLN PLACE



AREA

Internal Living Area	98.4m ²
External Living Area	17.9m ²
TOTAL	116.3m²

DIMENSIONS (M)

Living/Dining	4.5 x 5.0
Kitchen	3.4 x 3.9
Study	2.5 x 3.0
Bed 1	3.8 x 3.2
Bed 2	3.0 x 3.0
Bath	1.6 x 3.2
Ensuite	1.6 x 3.2
Laundry	1.7 x 2.0
Courtyard	3.1 x 4.5
Porch	0.9 x 4.4
Garage	5.8 x 3.4

DISCLAIMER: This plan is an artist's impression. Measurements are approximate and are to be used as a guide only.

For more information please contact:

 0418 277 007

 joepelle@lincolnplace.com.au