



MUDGEES SPRING LIFESTYLE ESTATE

by LINCOLN PLACE


The MURPHY

The Murphy home design maximises every inch of living space. Boasting an open-plan layout, this home combines a generous lounge area leading to an inviting outdoor entertaining deck, a modern kitchen featuring an island bench and a light filled dining area. There are two bedrooms, each with built-in robes, and one with an ensuite. The Murphy also features a family bathroom, a private study, a well-equipped laundry, clever storage solutions, and a convenient carport accommodating two vehicles. Embrace a new level of low maintenance living with The Murphy.



Render is an artists impression only and is subject to change.

For more information, contact Peter:

 0488 738 379

 petervanags@lincolnplace.com.au

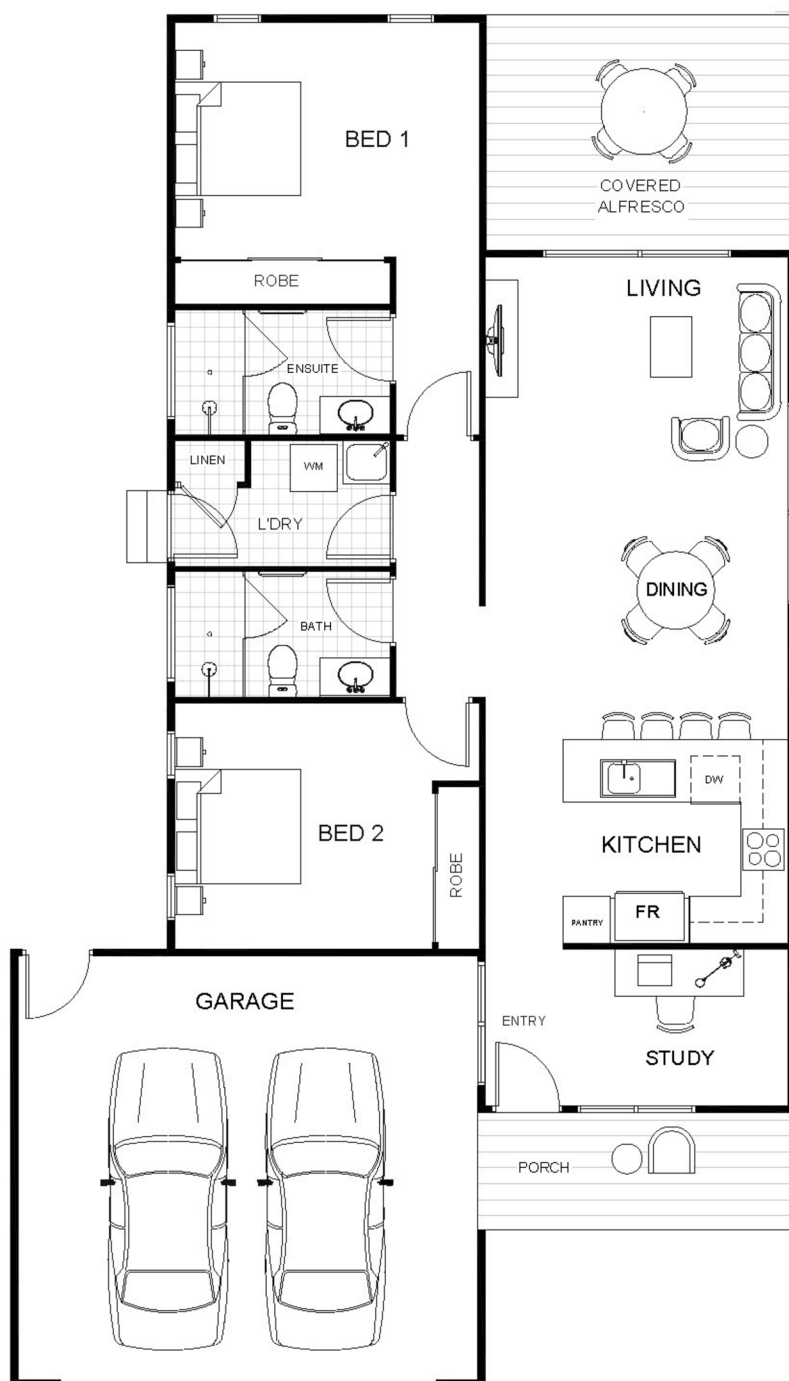
July 2025



MUDGEES SPRING LIFESTYLE ESTATE

by LINCOLN PLACE

2  2  1  2 



AREA


| | |
|----------------------|------------------------|
| Internal Living Area | 69m ² |
| External Living Area | 18m ² |
| TOTAL | 87m² |

DIMENSIONS (M)

| | |
|------------------|-----------|
| Living | 3.0 x 3.8 |
| Dining | 3.0 x 3.8 |
| Kitchen | 2.6 x 2.9 |
| Bed 1 | 3.0 x 3.9 |
| Bed 2 | 3.1 x 3.3 |
| Study | 2.0 x 2.9 |
| Bath | 1.6 x 2.7 |
| Ensuite | 1.6 x 2.7 |
| Laundry | 1.5 x 2.7 |
| Covered Alfresco | 3.0 x 3.9 |
| Porch | 1.5 x 3.9 |
| Garage | 5.9 x 5.4 |

DISCLAIMER: This plan is an artist's impression. Measurements are approximate and are to be used as a guide only.

For more information, contact Peter:

 0488 738 379

 petervanags@lincolnplace.com.au

July 2025