

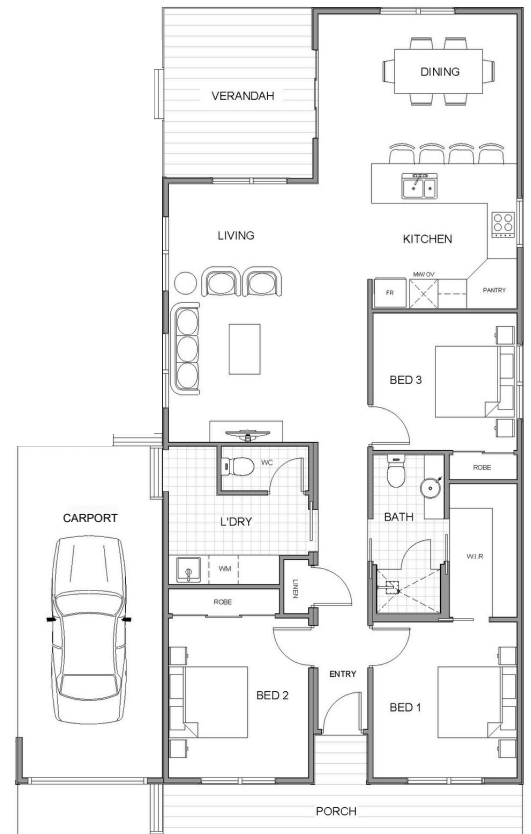


# PORTLAND LIFESTYLE ESTATE by LINCOLN PLACE

## The EDGEWATER


3  1.5  1 

The Edgewater is a combination of practicality and style. A spacious kitchen opens to a dining area with easy access to the family lounge room and verandah. There are three bedrooms, all with wardrobes, and a large family bathroom. A spacious carport offers parking for one car.



120 Derril Road, Portland, VIC, 3305

For more information please contact:

 0418 809 510

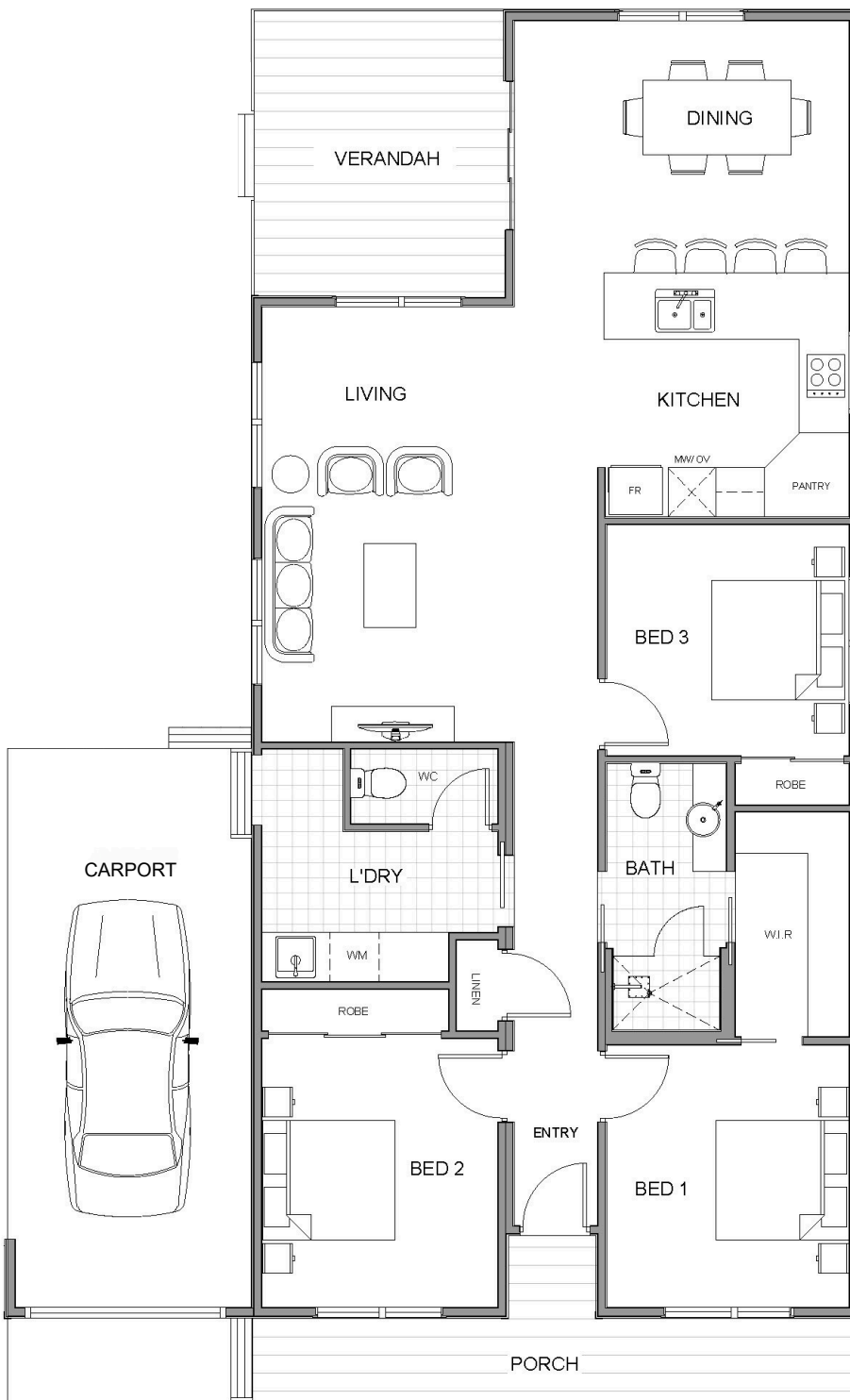
 [kevin@assetsrealestate.com.au](mailto:kevin@assetsrealestate.com.au)

August 2024



# PORTLAND LIFESTYLE ESTATE

by LINCOLN PLACE




3  1.5  1 

## DIMENSIONS (M)

Living	3.0 x 5.3
Dining	4.2 x 3.5
Kitchen	3.7 x 3.0
Bed 1	3.0 x 3.2
Bed 2	2.9 x 3.4
Bed 3	3.0 x 2.8
Internal Area	103.9m <sup>2</sup>

For more information please contact:

 0418 809 510

 [kevin@assetsrealestate.com.au](mailto:kevin@assetsrealestate.com.au)

August 2024