

The Croft



🛏️ 2 🍷 1 🏠 1

The Croft is where everyday living feels like a getaway. Its airy open-plan design, sleek kitchen and spacious bedrooms make it the perfect mix of comfort and charm.

Features you'll love:

- Entertainer's kitchen with peninsula bench and plenty of storage
- Bright living area flowing onto a welcoming front porch
- Thoughtful inclusions like a compact laundry and spacious bathroom

**Lincoln
Lifestyle**
Huntly

For more information:

0447 641 770 kimmartin@lincolnplace.com.au

The Croft

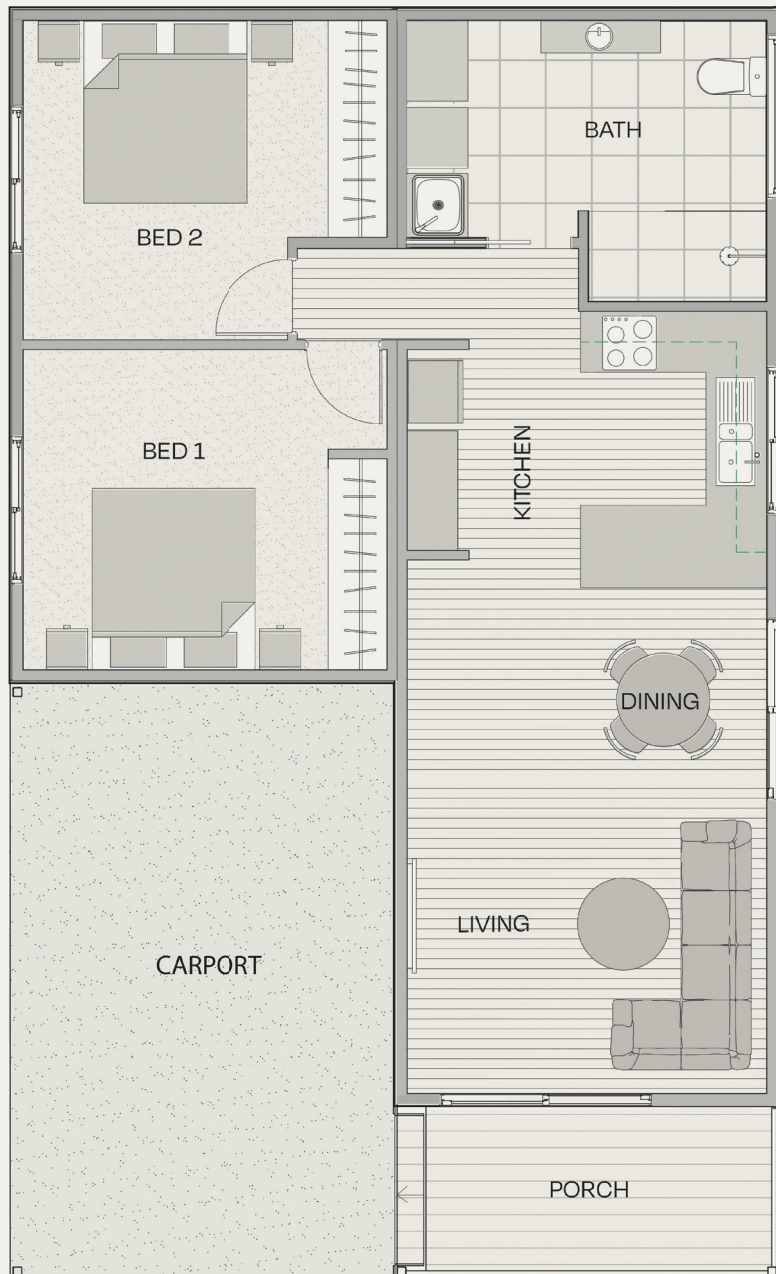


Floorplan

Total Area	94m²
Internal Living Area	66m ²
External Living Area	6m ²
Garage	22m ²

Dimensions (m)

Living/Dining	4.6 x 3.8
Kitchen	3.0 x 3.8
Bed 1	3.2 x 3.8
Bed 2	3.2 x 3.8
Bathroom	2.8 x 2.8
Alfresco	1.7 x 3.8
Garage	5.9 x 3.8



Disclaimer: This plan is an artist's impression. Measurements area approximate and are to be used as a guide only.

Colour Selections

Customise your home with a range of colourways.

Pair any interior palette with your favourite exterior look.

Serene – Classic and calming

Coastal – Fresh and contemporary

Urban – Modern and industrial

Luxe – Dark and moody

Scan to view the home



Your home inclusions

And upgrades designed for you

External

- Colourbond roof and fencing
- Slab on ground with termite controls
- Steel roof trusses and wall frames
- Merbau decking with balustrade
- Insulated roof and walls
- Powder coated aluminium frame windows
- Flyscreens to all windows and external doors
- Clothesline
- Carport roller door with remote control (home specific)
- Concrete path, driveway and landscaping to front of home
- 2.5kw solar system and roof exhaust fan
- Garden taps to front and rear yards

Internal

- 2.4m high ceilings with sections of raked ceilings
- Godfrey Hirst carpet to bedrooms
- Hybrid Vinyl plank floating flooring
- Tile flooring to bathroom and laundry
- Built-in wardrobes to bedrooms
- Single roller blackout blinds throughout
- R2.0 ceiling and wall insulated batts

Kitchen

- Double stainless steel undermounted sink
- 600mm electric oven and induction cooktop
- 600mm slide out rangehood
- Free standing dishwasher
- Soft close drawers and cupboards

Bathroom & Laundry

- Semi frameless or frameless glass shower screens (home specific)
- Frameless mirrors to bathrooms
- Chrome finished tapware and towel rails
- 30L stainless steel laundry tub and mixer
- Separate vanity with Caesarstone top
- Semi recessed basin/s
- Shower set with overhead and handheld heads

Electrical & Climate

- 10w LED downlights throughout
- External wall lights and pendant lights in black
- USB powerpoints and data point as per electrical plan
- Hardwired smoke detectors
- Ceiling fans as per electrical plan
- Tastic heat lamps, exhaust fan and LED light
- Electric heat pump hot water system
- 5kw split system r/c air conditioning

Optional Upgrades

- Appliance upgrade + stone benchtops
- Floor to ceiling tiles + stone vanity
- Replace 2 kitchen cupboard doors with 3 drawers
- Double glazed windows + underfloor insulation
- Modern black fixtures and accessories as per the colour selections brochure
- 100% wool carpet to bedrooms + Ekodeck

Disclaimer: Any information or content provided in this document is intended as a general information only and does not form an offer, guarantee or contract and does not constitute business, financial or real estate advice. You should make your own enquiries, (including as to the accuracy, currency, reliability or completeness of any information provided) and obtain professional advice where appropriate, before making any such decision. All care has been taken in the preparation of the information and published materials produced by Lincoln Place including, but not limited to, price, property area, floor size and general property description. However, Lincoln Place does not make any representations or give any warranties about its accuracy, reliability, completeness or suitability for any particular purpose. Information, furnishings, images and artistic impressions of exteriors and interiors are intended as a guidance for illustrative purposes only and may contain optional items that are not included as standard. The information, pricing, availability, dimensions, specifications, inclusions, landscaping and materials may be changed without notice. Optional upgrades are subject to availability. Ask your sales team for more information. August 2025.