



ALBURY GARDENS LIFESTYLE ESTATE  
*by* LINCOLN PLACE

# The HADLER

From \$330k

2  1.5  1 

No need to compromise on features or style with the Hadler. This two bedroom home offers ample living space and makes the most of natural light. The open plan layout includes a lounge room, dining area and modern kitchen. The outdoor deck extends the living space and there is a carport with space for one car.



7 Catherine Crescent, Lavington, NSW, 2641

\*Artist's impression only

For more information please contact:



1300 844 492



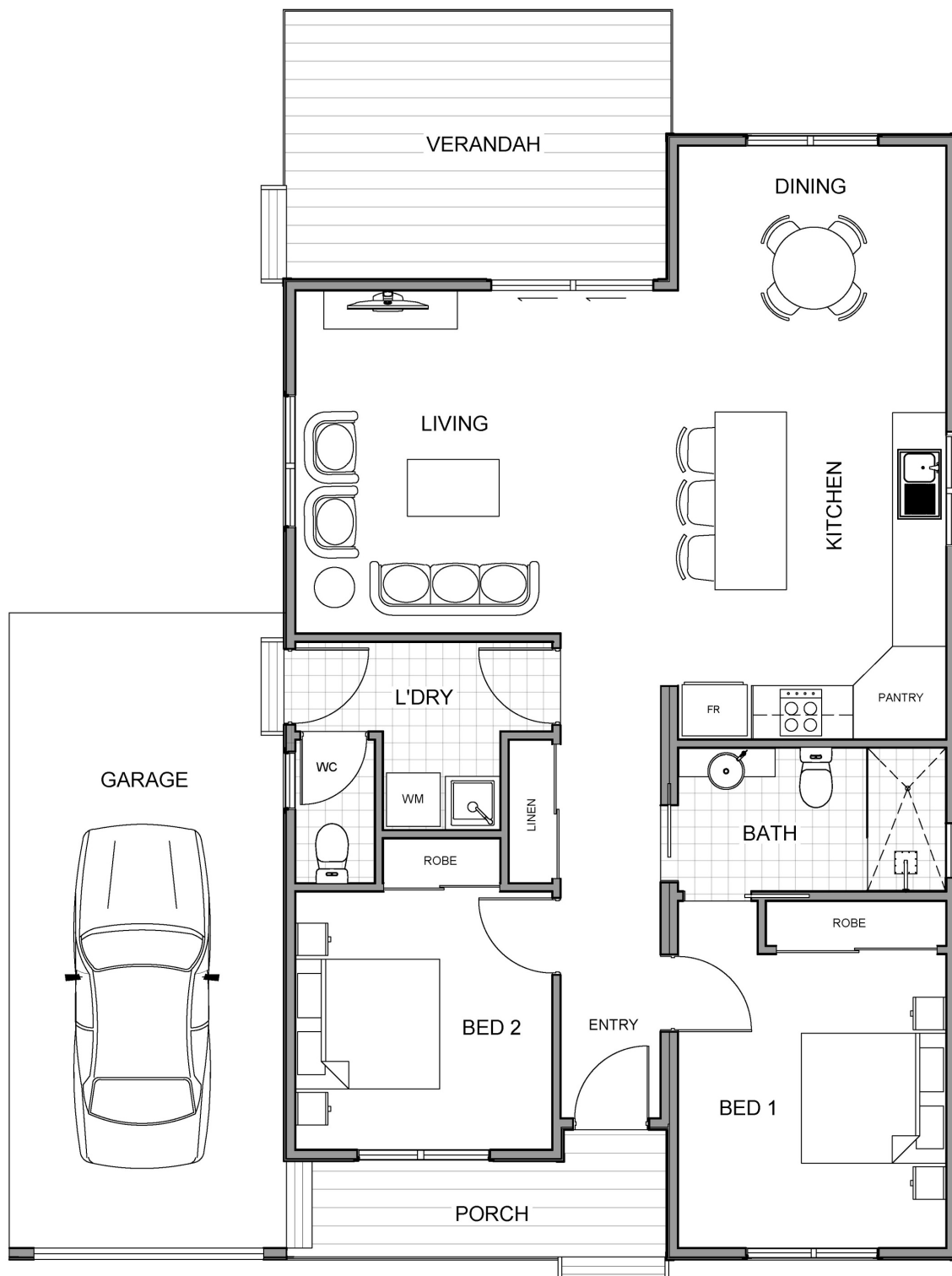
[info@lincolnplace.com.au](mailto:info@lincolnplace.com.au)

September 2023




# ALBURY GARDENS LIFESTYLE ESTATE

by LINCOLN PLACE



For more information please contact:

 1300 844 492

 [info@lincolnplace.com.au](mailto:info@lincolnplace.com.au)

September 2023